

## BOARD MEETING

<b>Title</b>	Berkshire West Place update		
<b>Paper Date:</b>	08 September 2024	<b>Board Meeting Date:</b>	19 September 2024
<b>Purpose:</b>	Information / Assurance	<b>Agenda Item:</b>	10
<b>Author:</b>	Helen Clarke, Deputy Place Director – Berkshire West	<b>Exec Lead/ Senior Responsible Officer:</b>	Matthew Tait, Chief Delivery Officer
<b>Executive Summary</b>			
<p>This paper gives an update on elements of the Berkshire West Place-based partnership, including:</p> <ul style="list-style-type: none"> <li>• Mental Health Support Teams.</li> <li>• Same day Urgent Access.</li> <li>• Special education needs and assessment.</li> <li>• Community Wellness outreach, which is part of the local health inequalities work.</li> </ul>			
<b>Action Required</b>			
<p>The board are asked to:</p> <ul style="list-style-type: none"> <li>• Note and discuss contents of report and the progress of place-based partnership working in Berkshire West.</li> </ul>			
<b>Conflicts of Interest:</b>	Conflict noted: conflicted party can remain and participate in discussion.		
<p>This report contains information relating to organisations that partner members of the Board lead/are employed by. The perspective of these members is an important aspect to enable the Board to focus on where the ICB (Integrated Care Board) and system contribute to improvement.</p>			
<b>Date/Name of Committee/ Meeting, Where Last Reviewed:</b>	Place and system committee receive regular updates on Place partnerships.		



**Buckinghamshire, Oxfordshire  
and Berkshire West**  
Integrated Care System



**Berkshire West**  
Health and Care  
Partnership

# Berkshire West Update

BOB ICB Board

September 2024

**Matthew Tait – Chief Delivery Officer**



# CONTENTS

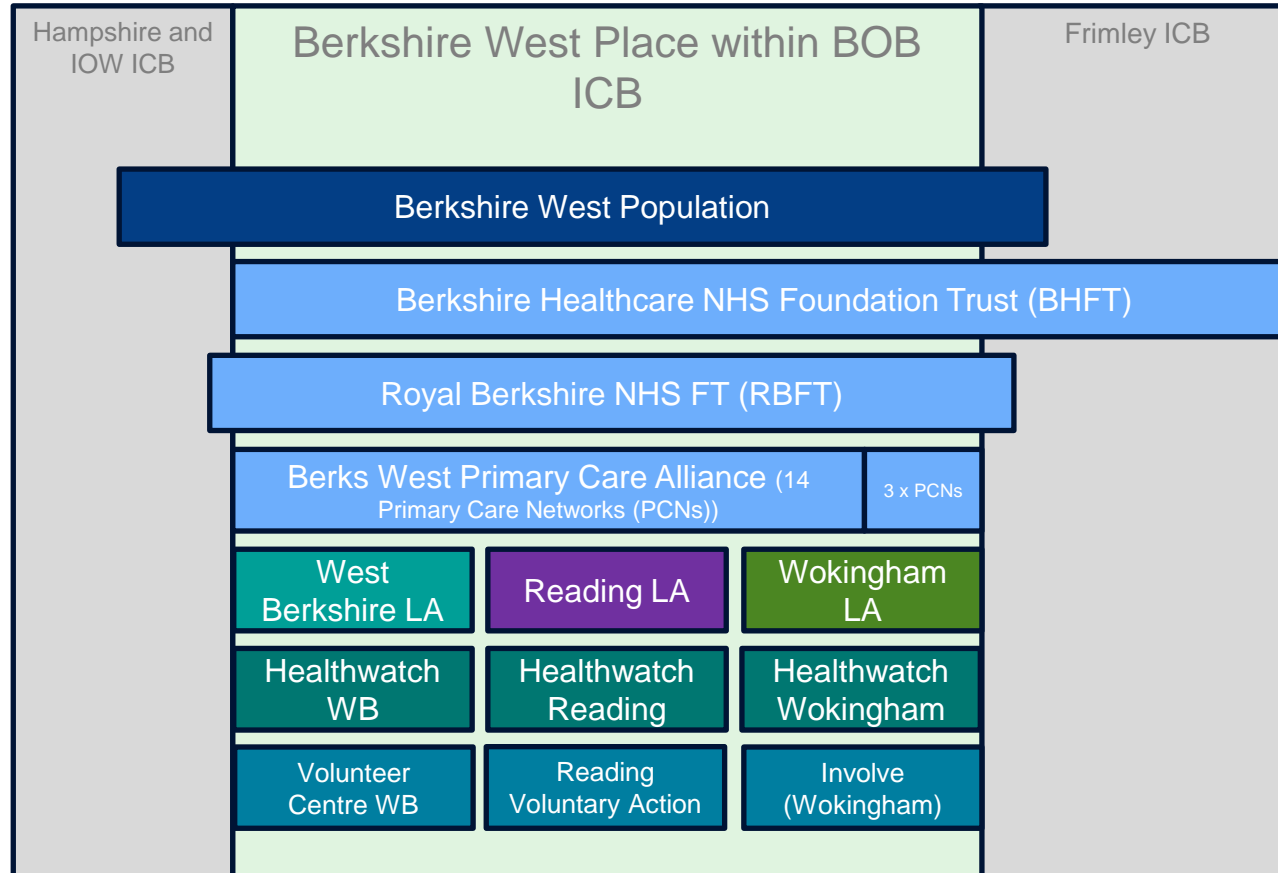
**Section 1 – Overview**

**Section 2 – Current areas of focus**

**Section 3 – Strategic priorities**

# 1.0 Overview of Berkshire West – our footprint

The Berkshire West footprint is complex and is not coterminous with all partner geographies



80% of residents access non-specialist acute services in Berkshire West, with c.20% seeing Frimley or Hampshire as their local hospital(s)

BHFT provide community and mental health services to Berkshire West and also Berkshire East within the Frimley ICB footprint (approx. 50:50 split)

RBFT predominantly serve the acute needs of the Berkshire West population

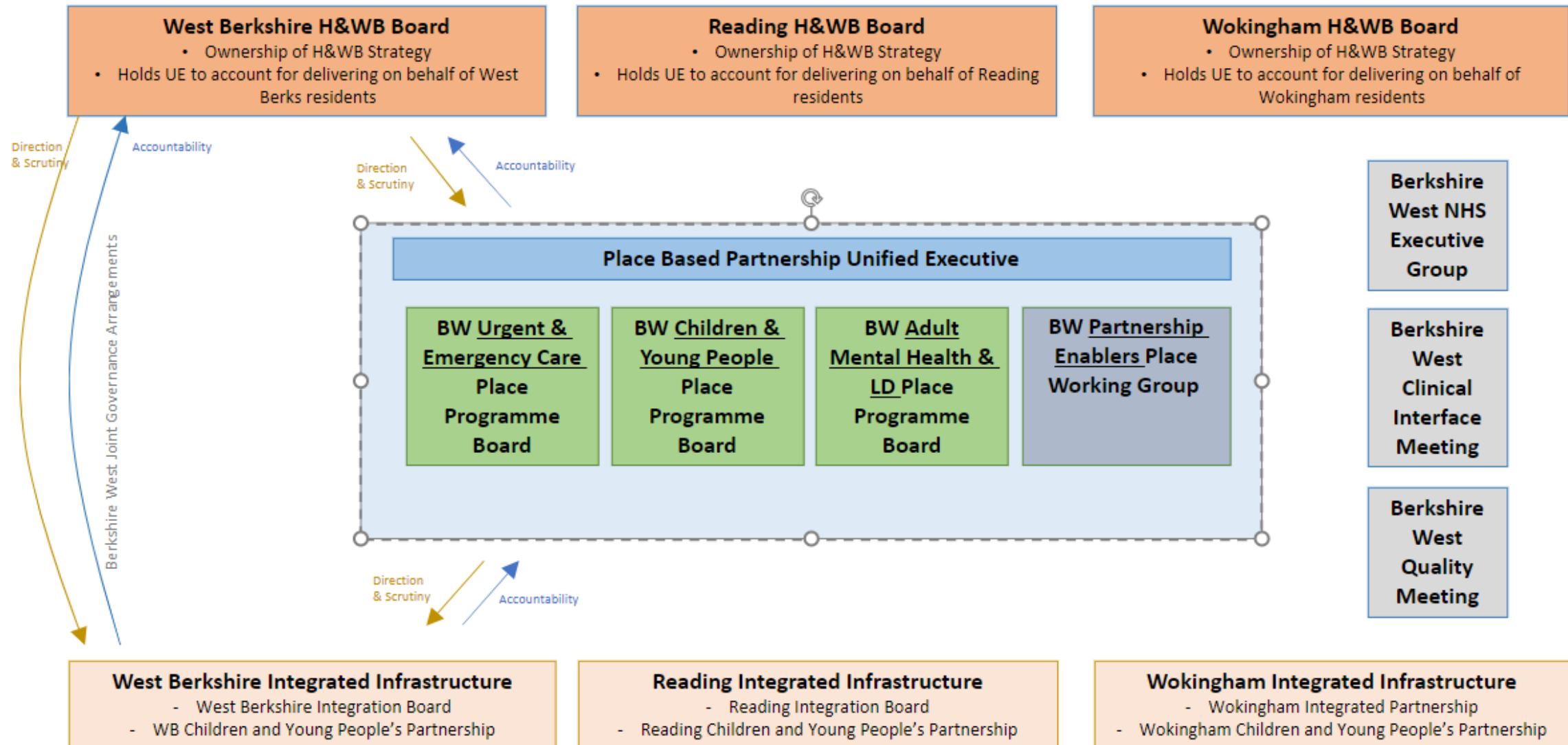
There are 17 PCNs in Berkshire West. Fourteen of these formed an Alliance in 2023, three PCNs chose not to join.

Three separate unitary authorities come within the Berkshire West footprint

Three separate Healthwatch arms align with each of the LA geographies

Each LA footprint has a lead VCSE coordinating organisation

# 1.1 Our Place-Based Partnership



## 2.1 Current areas of focus

As a Place Partnership we have prioritised a number of service areas that affect all our organisations and require a joint plan to address, including:

**MHST** – developing our Mental Health Support Teams that outreach into schools, improving coverage and uptake of whole-school wide initiatives and support for individuals.



**Same Day Urgent Access** – we are developing a blueprint to simplify and improve services for residents who have same-day urgent health needs. This also aims to release time to be spent on proactive preventative services. Spanning General Practice, Acute, and Community services.

**SEND** – working with our three LAs to review and improve our services that support children with Special Educational Needs and Disabilities, and their families. Including implementing recommendations from our recent review of NHS therapy services for children and young people.

**Community Wellness Outreach** – using ICB Inequality and Prevention funding to take enhanced health-checks into trusted community locations, alongside using population health information to proactively seek out those individuals most in need and address inequalities.

# PRIORITY 1 – Same Day Access

## Vision

To develop same day urgent access services across Berkshire West. The aim of the new model of care is to enhance the provision of same day emergency care and the primary care offering for the population of Berkshire West, supporting RBFT ED and delivery of the BOB ICS Primary Care Strategy

## Objectives

Current pilot Reading Urgent Care Centre (contract ends September 2024)

Procurement of a new pilot same day access service at Royal Berkshire Hospital for 2025-2027

Strategic aim to develop a long term 'three hub' same day service model across Berkshire West

## Plan of action

- The current UCC contract, with services provided by HCRG care services, to be extended until March 2025
- Interim pilot service to be established at Royal Berkshire Hospital, operational from 1 October 2024, to deliver same day primary-care led capacity for GP-led triage and streaming from ED

- Building on interim solution and RBFT estate work, a new SDA service will be procured, operational on 1 April 2025
- The service will provide primary-care led, same day access to patients from multiple referral sources

- Place priority to implement new model of same day access
- The model will allow a three-hub scenario to enable local solutions and local capacity best suited to Berkshire West, Reading and Wokingham services, demographics and demand, with a focus on digital triage and risk stratification

# PRIORITY 2 – SEND and Therapies Review

- Working with local authority leads, BHFT and RBFT to prepare for SEND inspections in each of the three areas
- Ongoing further review and development of Self-Evaluation Frameworks (SEF)
- Development of SEND data dashboard underway as part of wider BOB programme
- Dry run for Annex A Information Requests scheduled in September for Wokingham and Reading
- Clarity commissioned to review therapy services in 2023 following previous SEND inspections and feedback from parent/carers forums. Resulting workstreams now agreed, also linking with wider BOB work on therapies and equipment.

## Therapies Review Workstreams

**Workstream 1:** Improve access and simplify pathways (NHS provider-led)

**Workstream 2:** Review of Education, Health and Care Needs Assessment process (multi-agency)

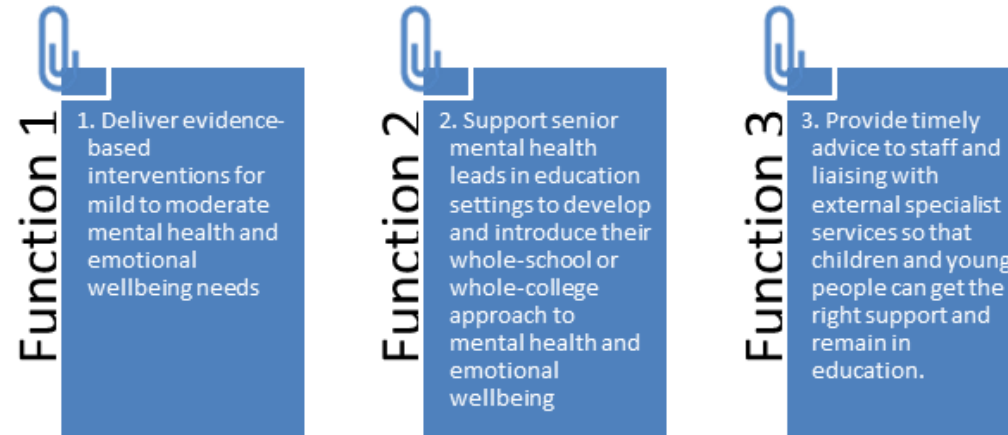
**Workstream 3:** Review of therapies model against new SEND framework (multi-agency)

**Workstream 4:** Pathways for children with acquired needs requiring intensive specialised therapy input (NHS provider-led)



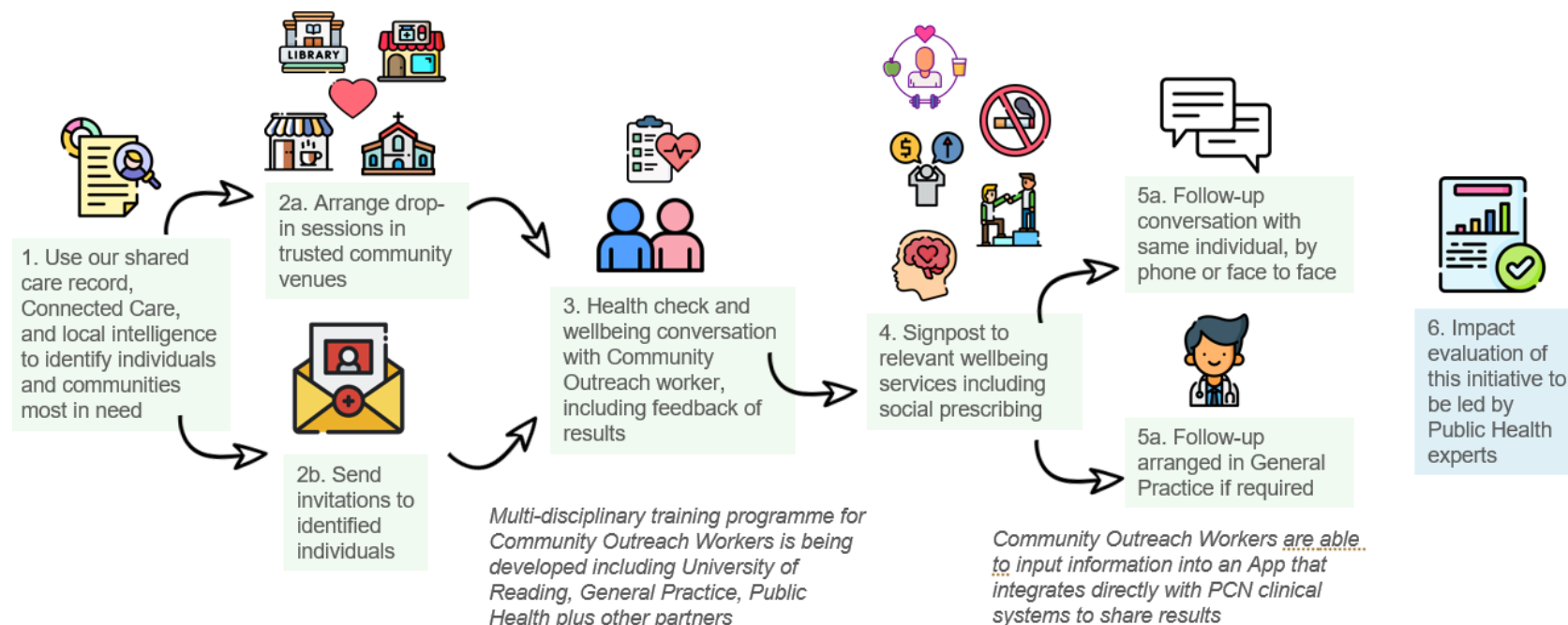
# PRIORITY 3 – Mental Health Support Teams in schools

Mental Health Support Teams (MHSTs) are a key element of our local mental health support provision for children and young people. MHSTs are aligned with identified mental health leads within schools and work to a national model with three key functions:



- Currently have 7 teams provided by Local Authorities (5 teams fully operational, 2 being mobilised)
- Coverage stands at 61% of school age population
- Have worked in partnership to review current arrangements and agree priorities for future provision
- ICB intends to re-procure teams under a single contract with a strong focus on integration, targeting services, co-production with children and young people and continuous improvement and development to reflect changing patterns of need and emerging best practice

# PRIORITY 4 – Community Wellness Outreach Programme



- Programme now live in all three local authority areas.
- 2,184 enhanced NHS Health Checks delivered by end of Q1.
- Combination of walk-in sessions targeted to particular populations and bookable slots following GP practice invitations.
- Early data shows effectively reaching target groups and identifying significant numbers of people with high BMI, high blood pressure and/or high blood sugar.
- 23% of those seen referred onwards to primary care, 21% to social prescriber and 17% to health behaviour support advice. Variation between local authorities being explored further.
- Early patient feedback data show most felt better informed and supported to manage CVD risk following check.

## 3.0 Strategic priorities for Berkshire West Place

### Future Models of Care Programme

- To use population health data and other intelligence from across our partnership to articulate a future model of care and investment strategy reflecting opportunities to **manage increasing demand** and **improve health and wellbeing** through preventative approaches and to **move care away from the acute hospital and into the community**.
- Future Models of Care work to shape **Building Berkshire Together** (RBFT's New Hospital Programme) and the further development of **Integrated Neighbourhood Teams** delivering multidisciplinary and co-ordinated proactive care to patients with complex needs or multiple long-term conditions. Further development of our approach to **Prevention and Inequalities** following evaluation of the Community Wellness Outreach service.

### Place Development

- Continued development of our **Place Based Partnership** including further review of governance and accountability arrangements in the light of the revised ICB Operating Model.
- Further review of **Better Care Fund** in conjunction with Health and Wellbeing Boards (total value £52.8m) considering further opportunities to maximise return on investment by working at scale.